

EASY eTest 1.0

Product sheet

Introduction

The advance in computer technology and internet applications has led changes in many areas of our life. One of areas where computer technology is intensively influencing now is about learning.

For thousand or hundred of years, people has used to use paper and physical meetings as the primary medium for knowledge and information transfer. As the computer technology advances, the role of paper and physical meetings is replaced by computers and communication networks, forming a new style of learning: the computer-based learning.

Computer-based learning encompasses many areas, and one of the area is about assessment and testing learner / student. EASY eTest 1.0 is a product to create, perform and evaluate students using a computer-based system.

About EASY eTest

EASY eTest assesses student skills in order for a personalized learning path to be prescribed, and, after training, determines the knowledge that has been retained. This application also allows the training administrator to create, edit, distribute, and deliver assessment tests and to track and report on student achievement.

Assessment determines a student's level of knowledge and skill in a particular job role, job function, or specific task. Pre-assessment, or prescriptive assessment, is often used prior to the implementation of a learning plan to identify individual skill gaps and to prescribe a learning path that contains only the needed training. Post-assessment often follows the learning program and can be used to track the student's progress as well as to evaluate the effectiveness of the learning. Assessment tests may be offered at the job role or job function level, and may contain multiple questions. Assessment content must be closely tied to the learning objectives. In order to provide effective, personalized learning paths, the assessment and content must be provided at a level that correlates to the task and associated knowledge needed to complete the task.

Assessment functionality within a computer-based learning system involves the ability to create, manage, and distribute assessments.

EASY eTest 1.0 consists of the following utilities / tools

- a. Question Manager
- b. Test Manager
- c. TestRuntime
- d. Reporting system

QuestionManager

QuestionManager is the first step in EASY eTest 1.0. Using QuestionManager, a training administrator / teacher / content developer can create, edit and collect test questions which is stored in a digital format / database.

The text format used for the question is a standard of WWW contents, the HTML format. This format, which is widely well-known and accepted, allows you to freely add various style to the question text and answers and also various object such as image, tables and applets and animations.

There are many type of questions supported by QuestionManager including multiple-choices, multiple-responses, matching, ordering, etc.

To make organizing questions easier, QuestionManager allow questions to be collected into question topics / groups.

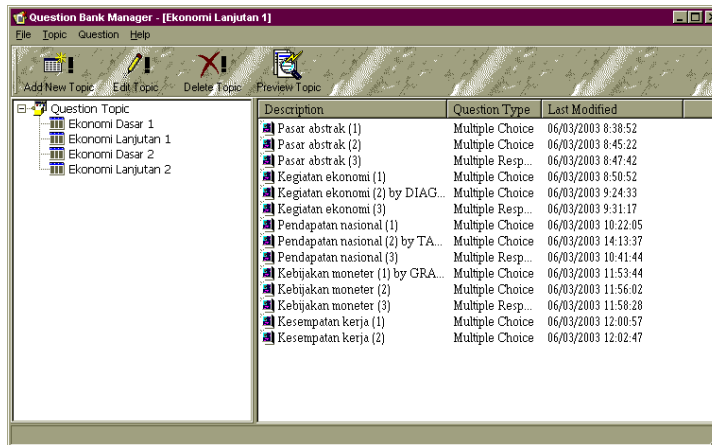


Figure 1 – Question Manager

QuestionManager also provides export / import facility in XML standard to make content among developers / authors possible. The questions can also be previewed before execution in TestRuntime system.

Test Manager

Test manager provides facility to select and arrange questions from various topics into a single test.

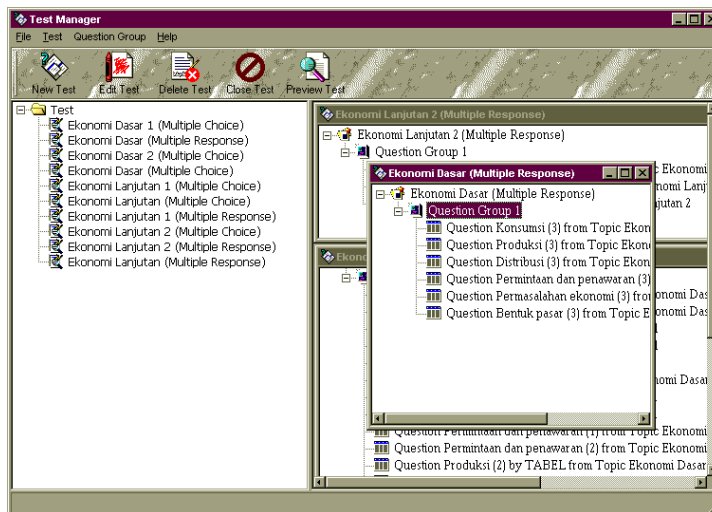


Figure 3 – Test management

The test can be created with various options, including: single-take test, randomization of questions, etc. Each test may consists of some question groups. Each question groups may have its own hint / title.

The test is now ready to be executed by TestRuntime module, but in addition to perform test online, the TestManager can also print the test for written / manual test process.

TestRuntime

TestRuntime is a web-based application that is used to execute the test. The student must first login for identification and then he/she is given a set of assigned tests. The student then simply click on the desired test to start the assessment process.

The result of the test can be instantly known and stored when the assessment process is completed.

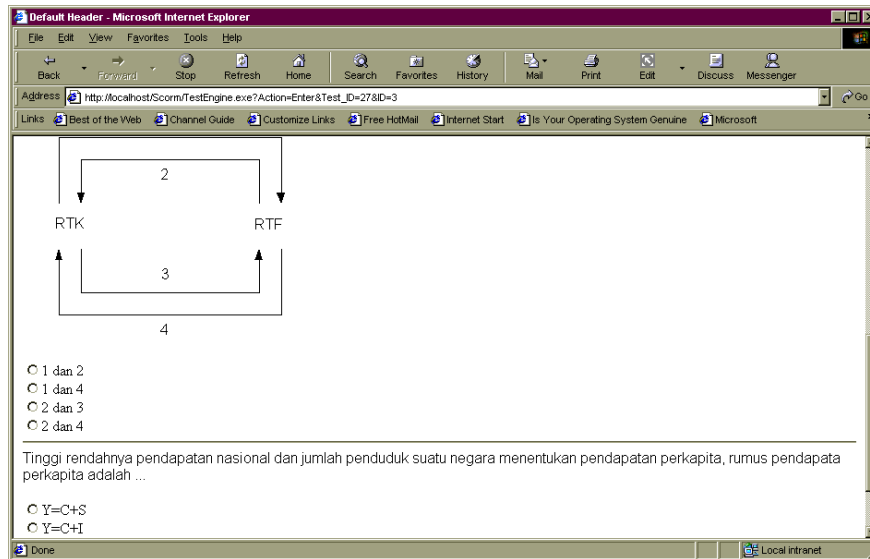


Figure 4 – Test execution

Reporting system

The reporting is also available via web. Using this facility, the learning administrator / teacher can easily view reports either based on test or student.

Credits

EASY eTest is a joint development between Synopsis Foundation (a non-profit organization which is working for popularizing and helping implementation of computer-based learning in high schools) and Ihsan Solusi Informatika.

EASY eTest is developed using EASY DAF product series, mostly EASY PowerComponents and EASY QuickBuilder.

Further information

For further information about EASY eTest and related applications, please contact:

Ihsan Solusi Informatika

Jl. Pamekasan No. 26 Bandung – Indonesia

Phn./Fax. : +62-22-7207448

Contact person: Ismir Kamili

E-mail: ismir.kamili@gmail.com